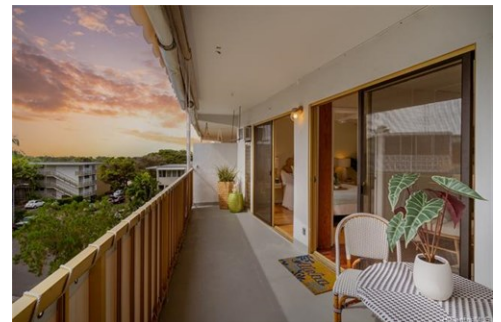


Residential, Low-Rise 6 or Less Stories - Honolulu, HI



\$ 810,000



3071 Pualei Circle #309, Honolulu, HI 96815

- » Beds: 2 | Baths: 2 Full
- » MLS #: 202130139
- » Condominium | 913 ft²
- » More Info: 3071PualeiCircle309.IsForSale.com



Sherine Duncan
Joel Cavasso
(808) 554-2262 (Sherine's Contact #)
(808) 216-9988 (Joel's Contact #)
Sherine@hawaiiLuxhomes.com
<http://www.HawaiiLUXhomes.com>

HAWAII
LUX
OF EXP REALTY RD-21841

eXp Realty
500 Ala Moana Blvd - Suite 400
Honolulu, HI 96813
(808) 554-2262

LOCATION!!!! Located at the foot of Diamond Head & across from Kapiolani Park and Waikiki beaches, Hawaii life doesn't get any better than living in this beautifully updated 2 bed 2 full bath TOP floor unit! This spacious apartment has two bedrooms, separated by two full bathrooms and a washer/dryer in the unit plus TWO covered parking stalls! Lots of natural light with a generous lanai for relaxing & a rooftop deck to enjoy sunsets in the evening after a long day. Pua Leahi Apartments is a well maintained low rise condo building of just 4 levels at the top of the circle with an elevator for convenience, too! Enjoy exercising in the park, swimming at the beach, surfing, hiking Diamondhead, then dinner at a lively Monsarrat eatery. all within walking distance! Come home and soak in your large jetted tub after a great long surf session....island living at its full potential!!

